

Bolderwood Deer Sanctuary From Burley

Trail	: HAMPTR0006
Activity	: Cycle
Type	: Country Escape
Terrain	: Towpaths and Cycle Tracks
Author	: Robert Stanley
Distance	: 9.2 miles / 14.8 kms
Ascent	: 581 feet / 177 metres
Location	: SU220041 / BH24 4HW



Deer Sanctuary
© Bob Ford



Bolderwood Arboretum
© Jim Champion



Anderwood Inclosure
© Jim Champion

Trail Summary

A cycle ride through the Forest from Burley to the Bolderwood Deer Sanctuary returning via Bolderwood Arboretum Ornamental Drive and the Anderwood Inclosure.

Trail Details

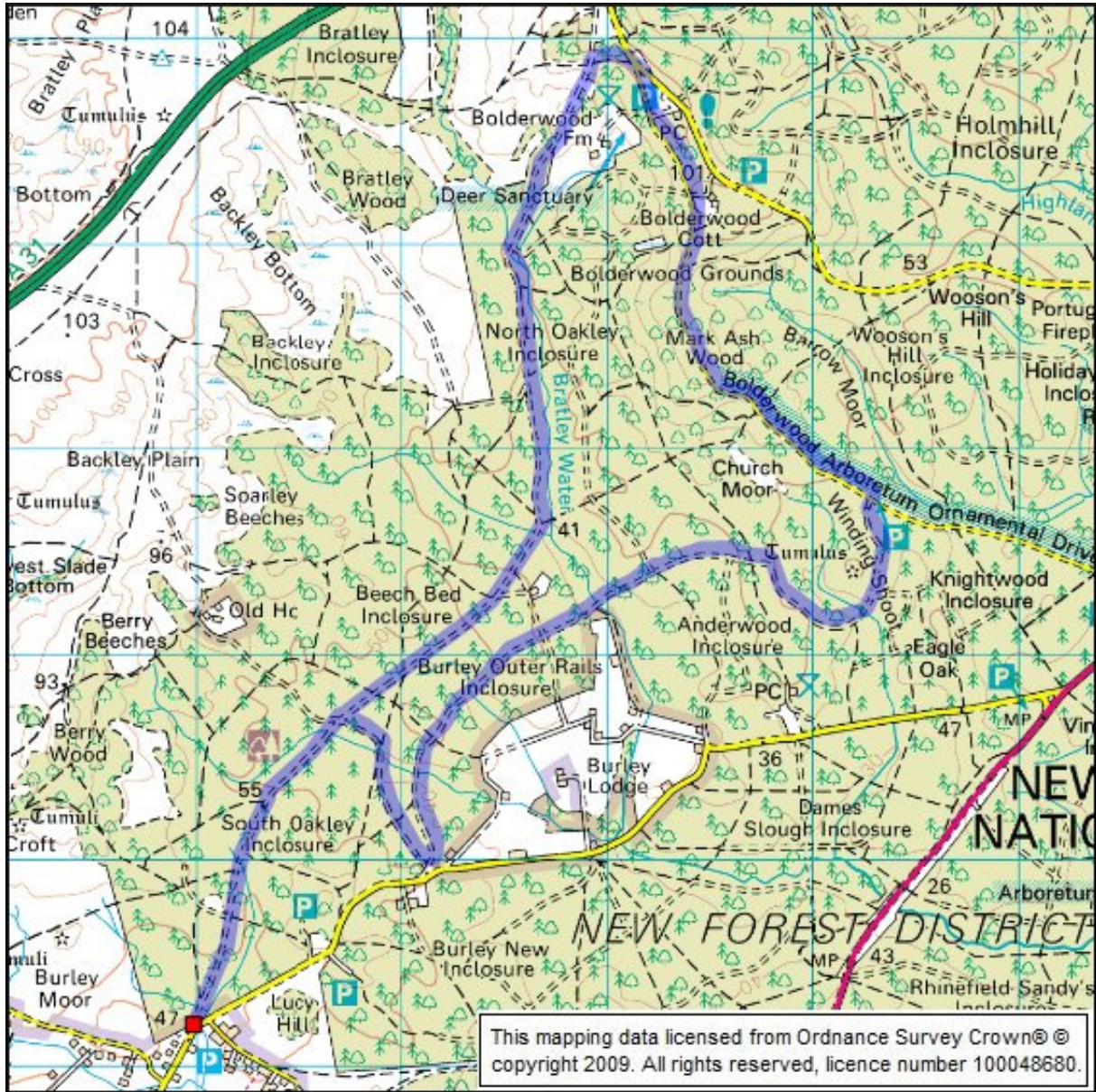
Leave the car park following the cycle track through South Oakley Inclosure. Continue along the track in a north easterly direction climbing gently over Woolfield Hill. Shortly after crossing Blackensford Brook the track heads north through North Oakley Inclosure and on to Bolderwood Farm. When you reach the car park turn right and swing back around in front of the Deer Sanctuary.

The first part of the return journey is via Bolderwood Arboretum Ornamental Drive. Take care as you will be sharing this part of the trail with cars. After 2.5 kms, when you reach a car park, turn right off the drive into Knightwood Inclosure. Follow the cycle track as it bears to the right into Anderwood Inclosure and then left down a hill.

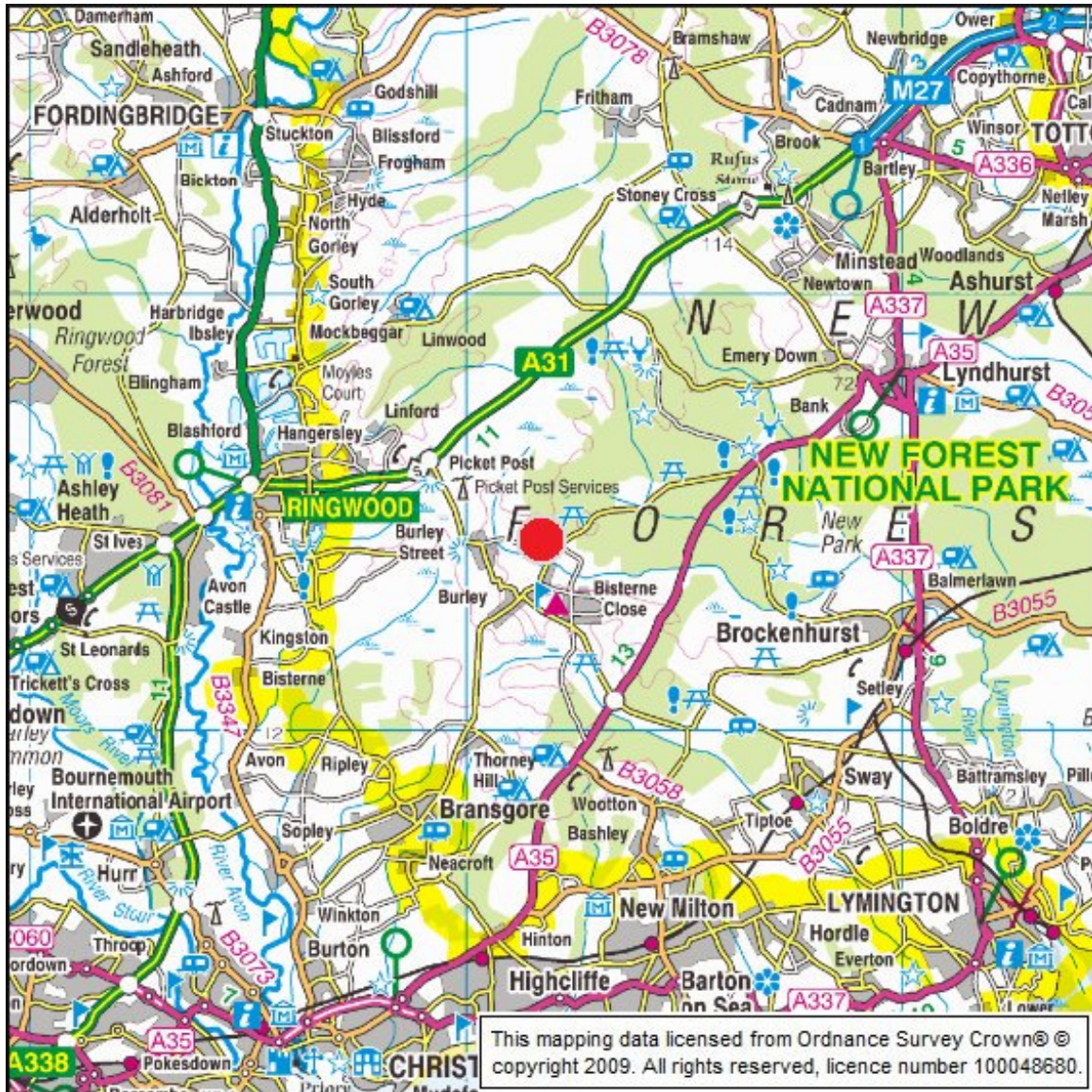
Cross back over Blackensford Brook and continue in a south westerly direction at first through Burley Outer Rails Inclosure and then south towards the Lyndhurst Road. Before you reach the road turn right and join the track heading north. Follow this until you rejoin the track in South Oakley Inclosure. Turn left and continue for 1.5 kms back to the car park.



Trail Map



Trail Location



Location Details

The trail starts and ends at the car park on the Lyndhurst Road 1 km north east of Burley village centre. By car Burley can be reached via the A35 from Lyndhurst and Christchurch or from Southampton via the A31. The nearest train station is in Brockenhurst. There are regular bus services to Burley from Ringwood, Southampton and Christchurch.