

THE NORTHPORT GREENWAY

The Northport Greenway runs for just over 1.5 miles from Wareham Quay, through the quiet streets of the town, past the railway station, through Northmoor Park and on to Wareham Forest. The route is waymarked with a G symbol. From there, it links to the Sika Cycle Trail (see overleaf).



The Greenway provides a great opportunity for leisure walking and cycling, allowing everyone safe access to the station and Forest, as well as providing a useful link for visitors arriving by train. Dorset County Council

has improved parts of the route by installing lighting, signage, crossings and surfaces.

We hope that local people will make good use of this Greenway as a safe route to work, school and the shops, making the town safer and quieter for everyone. Walking and cycling on local journeys not only reduces the volume of cars on the road, but also allows you to take some exercise.



OTHER WALKS IN WAREHAM

- Purbeck Way**
Walk from Wareham through a fantastic variety of landscapes to the spectacular coastline to the east at Ballard Down or the south at Chapman's Pool.
 - Purbeck Way West**
From Wareham, out to the west and down to Lulworth Cove on the Jurassic Coast.
 - Two Rivers Walk**
Six routes of differing length and difficulty focused on the Rivers Piddle and Frome and their wildlife habitats.
 - The Walls Walk**
Originally built in Saxon times to defend against attacks from the Vikings, the town walls now form a delightful walk around Wareham.
 - Wareham Forest Way**
A beautiful woodland walk through the forest reaching all the way to Sturminster Marshall on the northern boundary of Purbeck.
 - Sika Trail**
Enjoy the scenery of Wareham Forest on foot; the Sika Trail takes you through the forest on a 2 mile circular route that can be accessed from the Sika Trail carpark.
- Walks leaflets are available from Purbeck Information and Heritage Centre, South Street (opposite the quay).

CONTACT DETAILS

Purbeck Information and Heritage Centre
01929 552740

Dorset County Council
01305 221219 www.dorsetforyou.com

Purbeck District Council
01929 557337 www.purbeck.gov.uk

Forestry Commission
02380 283141 www.forestry.gov.uk

Cycle Experience
Cycle hire sales and repair at Wareham Station
01929 556601



SAFE CYCLING

STAY ON TRACK

Off-road cycling is only allowed on public/permitted bridleways, designated cycle routes or byways.

KNOW THE SIGNS

Public bridleways will be marked with blue arrows or a horse and rider. Permitted bridleways may also be marked with blue arrows or permissive path signs. Byways will be marked with red arrows. Please note: footpaths marked in yellow are for pedestrians only, NOT cyclists.

BE CONSIDERATE

You will probably be sharing the track with other people - always give way to walkers and horse riders and let them know that you are approaching.

BE SAFE

It is advised to wear a helmet and keep your bike well maintained. Take essential spares (puncture repair kit, pump etc). Remember food, drink, lights and wear bright/reflective clothing. If cycling alone, tell someone where you are going and what time you will be returning.



BE ALERT when crossing the golf course.

Give way to golfers at all times.

COUNTRYSIDE CODE

- Be safe - plan ahead and follow any signs.
- Leave gates and property as you find them.
- Protect plants and animals, and take your litter home.
 - Keep dogs under close control.
 - Consider other people.

HORSE RIDING PERMITS

Horse riding off of public bridleways is by permit only. Please contact the Forestry Commission for details at The Queen's House, Lyndhurst, Hampshire, SO43 7NH or telephone 02380 283141.



Forestry Commission



Sand lizard

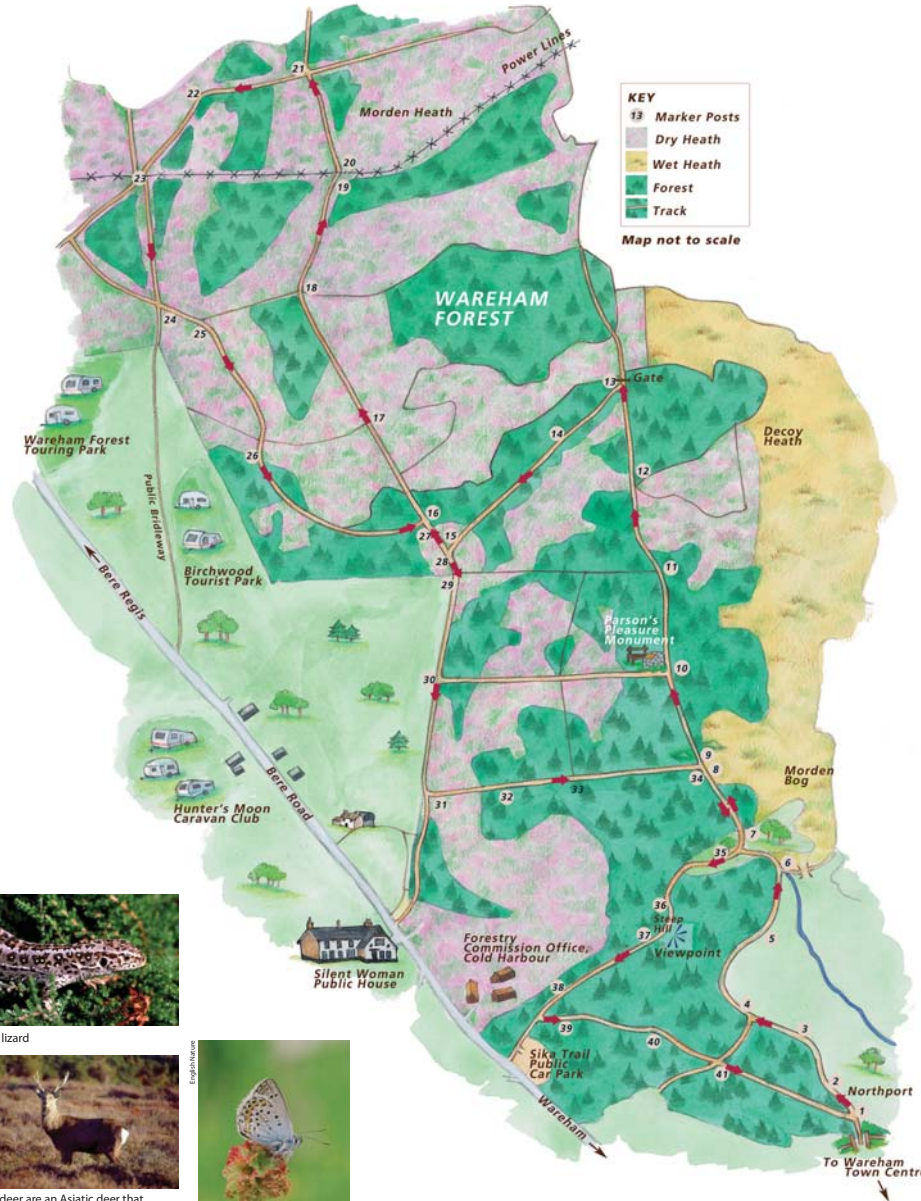


Sika deer are an Asiatic deer that were first introduced to Britain from the mid nineteenth century. Many escaped and formed wild populations like the herd in Wareham Forest today.



Silver-studded blue butterfly

THE SIKA CYCLE TRAIL



If you choose to follow the posts in sequence, they will always be on your right. Not all tracks are shown on the map.

THE SIKA CYCLE TRAIL



The Sika Cycle Trail runs for about 7 miles around Wareham Forest. Its southern point links to the Northport Greenway (see overleaf) thereby providing a safe, off-road route from Wareham to Wareham Forest and the Silent Woman pub, and vice versa.

The trail follows tracked routes through the forest and heath. It is generally flat with a couple of inclines, and is suitable for cyclists of all ages and abilities. Simply follow the numbered posts around the route.

WAREHAM FOREST

Much of the Forest is in the throes of a long-term restoration project. Where suitable, trees that were initially planted for timber are now being felled to return large areas to heathland. The Forest is now managed for its high conservation value, for recreation, as well as for its timber.

Your cycle ride will take you through high forest and over open heath, with a chance to view the variety of wildlife that thrives within this mosaic of landscapes. Whether it's Crossbills in the pine tops, or Sand lizards in the heather, there is always something to see.

The Trail will also take you past Morden Bog National Nature Reserve that gives a stunning vision of how the heathland can develop over time.

HEATHLAND

Heathland holds a wealth of animal and plant interest. Along with the familiar sight of heather and gorse, many nationally and internationally rare species live there. However, there is now only about 7000ha of heathland in Dorset. The habitat is threatened by the invasion of scrub (this is a man-managed environment which needs intervention to prevent scrub dominating); inappropriate agricultural practices; lack of management and forestry. Any of these threats are likely to lead to the local extinction of heathland species.

HARDY'S EGDON HEATH PROJECT

The Hardy's Egdon Heath Project is the largest heathland restoration project of its kind in the UK. Under the financial support of the Heritage Lottery Fund, it involves 13 partner organisations working on 75 heathland sites across Dorset.

Working from 2000 to 2006, the Project's key objectives are to benefit our nationally important wildlife, whilst enhancing public appreciation and enjoyment of the heathlands. A programme of works has been drawn up to facilitate the restoration works, as well as provide new public access onto and around some of the sites, such as the Sika Cycle Trail.